

A map of the state of Florida with major cities and highways marked. A large black arrow points from the word "PROJECT" to the Orlando area. The cities labeled on the map include: Pensacola, Chelet, Lakes City, Jacksonville, St. Augustine, Gainesville, Ocala, Deland, Daytona Beach, Orlando, Palm Bay, Bartow, Sarasota, Ft. Pierce, West Palm Beach, Ft. Lauderdale, Miami, and Key West.

—BEGIN R/W PROJECT @ I-4  
STA. 324+80.25

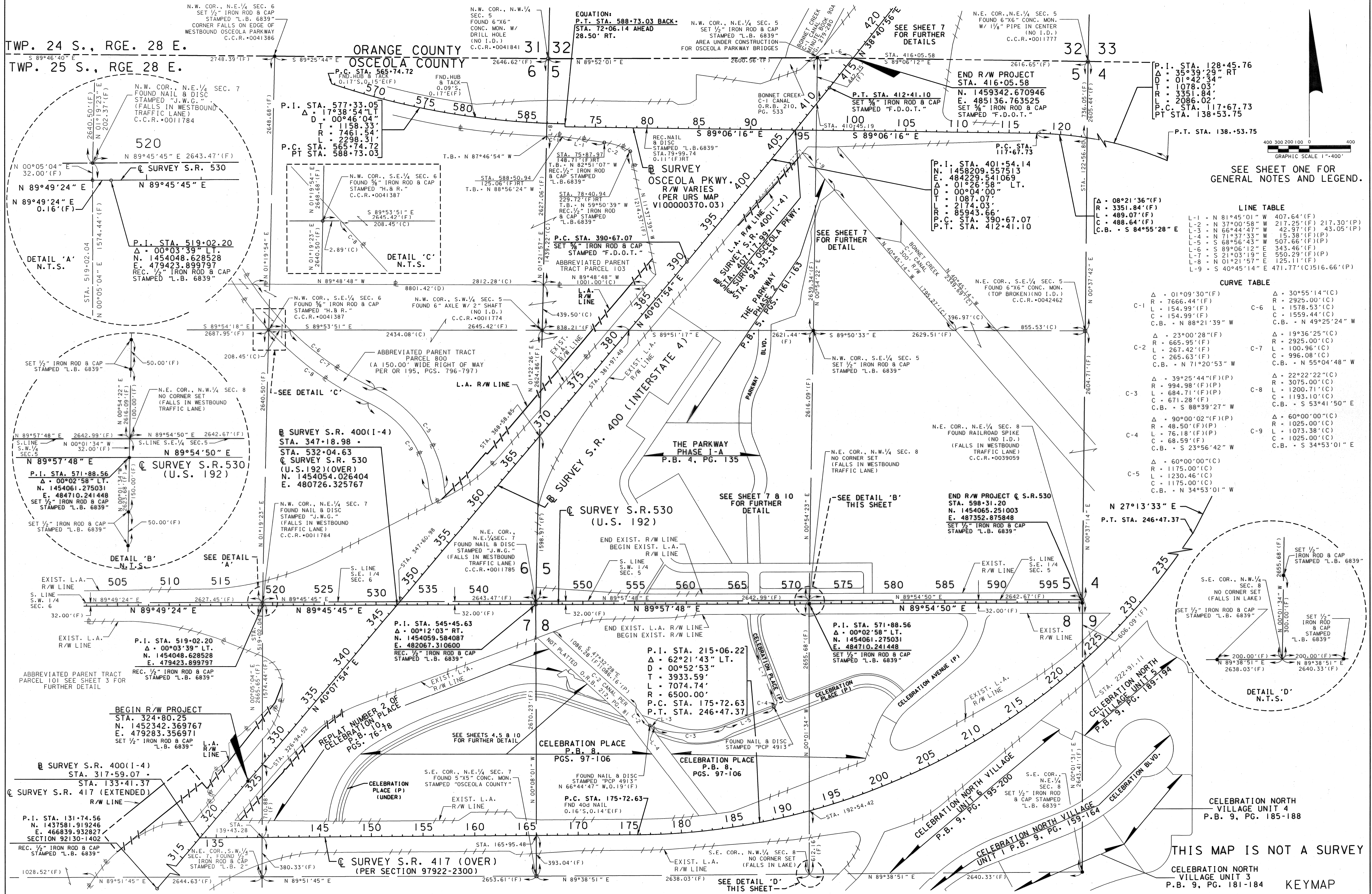
1. THE BEARINGS AND COORDINATES SHOWN HEREON ARE BASED ON THE FLORIDA STATE PLANE COORDINATE SYSTEM, EAST ZONE, 1983 NORTH AMERICAN DATUM, 1990 ADJUSTMENT, AS ESTABLISHED FROM A ROUNDED BEARING OF N 40°07'54" E ON THE BASELINE OF SURVEY BETWEEN STATION 324+80.25 AND P.I. STATION 401+54.14.
2. THE CURVE DATA (TANGENT & LENGTH) AND THE CENTERLINE OF SURVEY STATIONING HAS BEEN CALCULATED BASED ON THE CENTRAL ANGLE OF THE CURVES EXPRESSED TO ONE-TENTH (00.0") OF A SECOND, AS DERIVED FROM THE COORDINATE VALUES FOR THE POINT OF INTERSECTION (P.I.) OF SAID CURVES. THE CENTRAL ANGLE OF THE CURVES AND ALL BEARINGS SHOWN HEREON HAVE BEEN ROUNDED TO THE NEAREST SECOND (00") PER FLORIDA DEPARTMENT OF TRANSPORTATION MAPPING STANDARDS.
3. UNLESS OTHERWISE NOTED ALL THE DATA DESIGNATED AS (F) IS THE RESULT OF DIRECT FIELD MEASUREMENTS, CALCULATED FROM A CLOSED FIELD TRAVERSE OR CALCULATED FROM REDUNDANT FIELD MEASUREMENTS.
4. THE EXISTING RIGHT OF WAY LINES AS SHOWN HEREON ARE BASED ON FLORIDA DEPARTMENT OF TRANSPORTATION RIGHT OF WAY MAP, SECTION NO.'S 97922-2300, 01, 02 STATE ROAD DEPARTMENT RIGHT OF WAY MAP, SECTION NO.'S 92130-2401, 92090-2502 AND URS BOUNDARY SURVEY OF OSCEOLA PARKWAY MAP V100000370.03, PERFORMED BY RUSSELL J. MARKS, P.S.M.# 5623 ON JUNE 26, 2001. RECORD TITLE OR PLAT DEDICATION, UNLESS SPECIFICALLY SHOWN OTHERWISE.
5. THIS RIGHT OF WAY MAP IS SUPPORTED BY DATA CONTAINED IN ELECTRONIC MEDIA FILE 1192.ARC AND FIELD BOOKS NUMBERED 2316221, 2003001, 2316101, 2316102, 21234, 21235, 21236, 21237, 21238 & 21239. THIS DATA IS FILED IN THE LOCATION SURVEY SECTION OF THE FLORIDA DEPARTMENT OF TRANSPORTATION DISTRICT FIVE OFFICE, IN DELAND, FLORIDA.
6. THIS RIGHT OF WAY MAP IS SUPPORTED BY A RIGHT OF WAY CONTROL SURVEY DATED DECEMBER 4, 2001, PREPARED UNDER THE RESPONSIBLE CHARGE OF RUSSELL J. MARKS PROFESSIONAL LAND SURVEYOR AND MAPPER NUMBER 5623. CERTIFIED COPIES OF THIS SURVEY ARE FILED OF RECORD IN THE DISTRICT 5 OFFICE IN DELAND, FLORIDA.
7. PROPERTY BOUNDARIES DETERMINED FROM FIELD SURVEY, PLATS OF RECORD AND RECORD TITLE.
8. ATTENTION IS DIRECTED TO THE FACT THESE MAPS MAY HAVE BEEN ALTERED IN SIZE BY REPRODUCTION. THIS MUST BE CONSIDERED WHEN OBTAINING SCALED DATA.
9. UNDERGROUND FOUNDATION ENCROACHMENTS NOT LOCATED.
10. RIGHT OF WAY MONUMENTS TO BE SET AFTER CONSTRUCTION OF PROJECT IS COMPLETE.
11. ONLY FIXED IMPROVEMENTS PERTINENT TO THE PARCELS TO BE ACQUIRED ARE SHOWN. FIXED INTERIOR IMPROVEMENTS NOT LOCATED.
12. THIS RIGHT OF WAY MAP WAS PREPARED FOR THE PURPOSE OF PREPARING LEGAL LAND DESCRIPTIONS, ACQUISITION DOCUMENTS, MONUMENTATION, PROPERTY MANAGEMENT, AND AS AN AID IN THE APPRAISAL OF THE RIGHT OF WAY REQUIRED FOR TRANSPORTATION FACILITIES.

THIS MAP IS NOT A SURVEY

[illegible]

STATE ROAD 400 (I-4) INTERCHANGE AT STATE ROAD 530 (US 192)





RIGHT OF WAY MAP

FLORIDA DEPARTMENT OF TRANSPORTATION  
RIGHT OF WAY MAPPING

APPROVED BY  
*Deborah Mott*  
FOR DISTRICT SECRETARY

DATE

4-26-02

REVISION

BY

DATE

REVISION

BY

DATE

REVISION

BY

DATE

REVISION

BY

DATE

REVISION

BY

DATE

REVISION

BY

DATE

REVISION

BY

DATE

REVISION

BY

DATE

REVISION

BY

DATE

REVISION

BY

DATE

REVISION

BY

DATE

REVISION

BY

DATE

REVISION

BY

DATE

REVISION

BY

DATE

REVISION

BY

DATE

REVISION

BY

DATE

REVISION

BY

DATE

REVISION

BY

DATE

REVISION

BY

DATE

REVISION

BY

DATE

REVISION

BY

DATE

REVISION

BY

DATE

REVISION

BY

DATE

REVISION

BY

DATE

REVISION

BY

DATE

REVISION

BY

DATE

REVISION

BY

DATE

REVISION

BY

DATE

REVISION

BY

DATE

REVISION

BY

DATE

REVISION

BY

DATE

REVISION

BY

DATE

REVISION

BY

DATE

REVISION

BY

DATE

REVISION

BY

DATE

REVISION

BY

DATE

REVISION

BY

DATE

REVISION

BY

DATE

REVISION

BY

DATE

REVISION

BY

DATE

REVISION

BY

DATE

REVISION

BY

DATE

REVISION

BY

DATE

REVISION

BY

DATE

F.A.P. NO. N/A

SECTION 92130

MAPS PREPARED BY

URS CORPORATION

W.P.I. No. 5147335

F.P. NO. 242531

FIELD BOOK NO.'S

SCALE: 1" = 400'

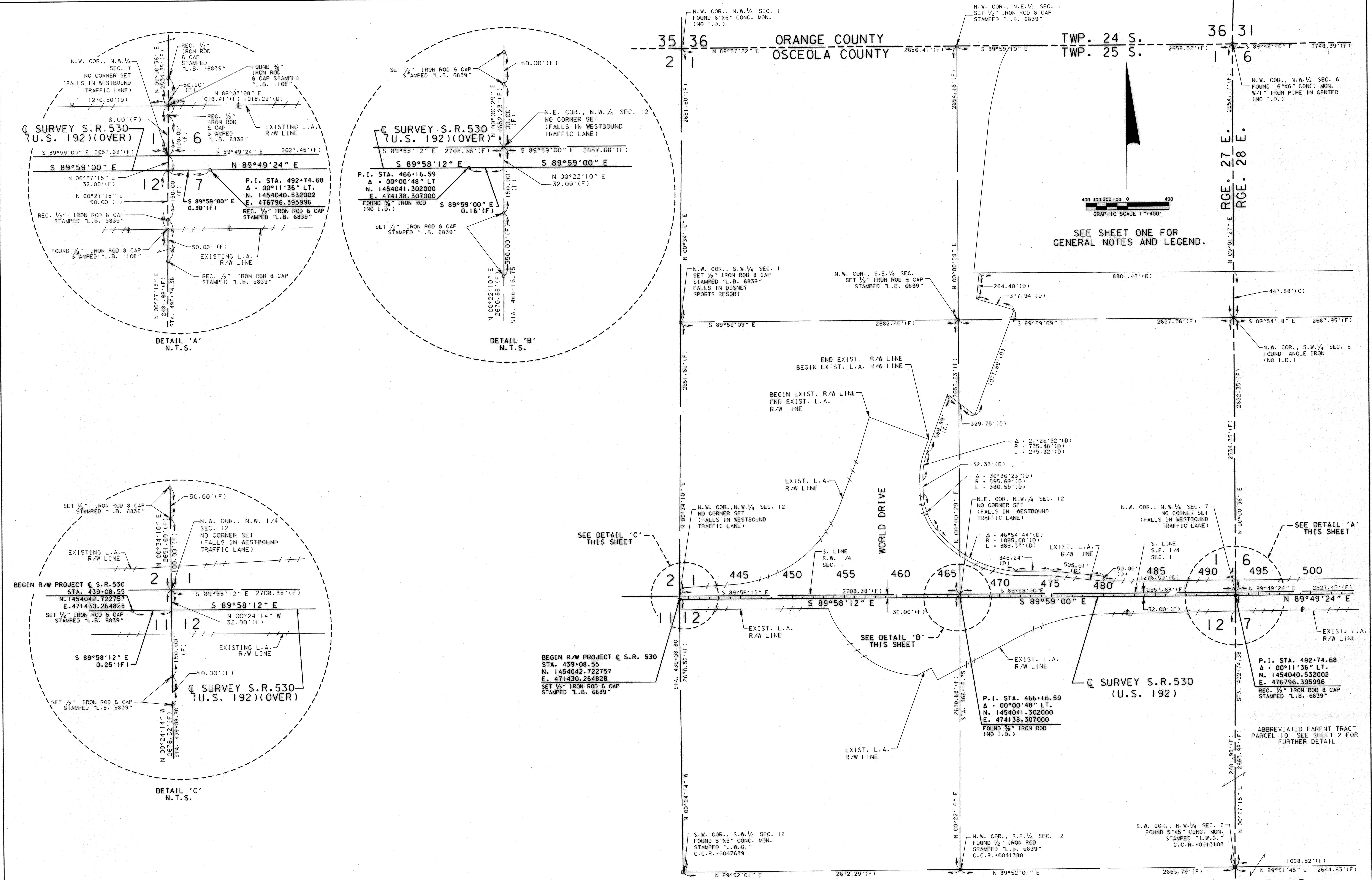
SHEET 2 OF 13

STATE ROAD NO. 400

OSCEOLA COUNTY

STATE ROAD 400 (I-4) INTERCHANGE AT STATE ROAD 530 (US 192)

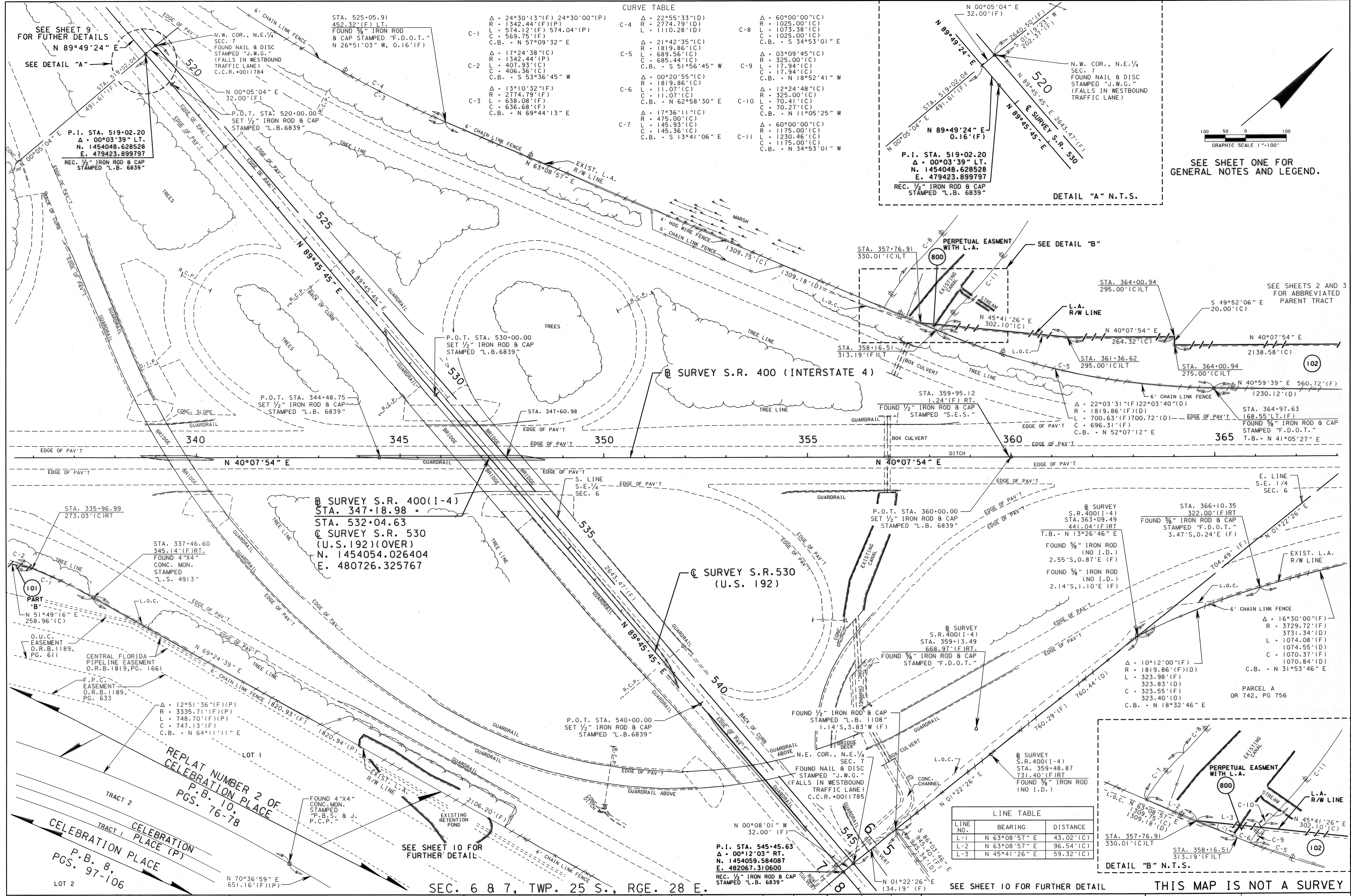








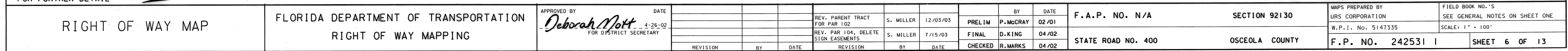




RIGHT OF WAY MAP	FLORIDA DEPARTMENT OF TRANSPORTATION RIGHT OF WAY MAPPING	APPROVED BY	DATE							BY	DATE	F.A.P. NO. N/A	SECTION 92130	MAPS PREPARED BY		FIELD BOOK NO. 'S
		<i>Deborah Mott</i>	4-26-02												URS CORPORATION	SEE GENERAL NOTES ON SHEET ONE
		FOR DISTRICT SECRETARY														
		REVISION	BY	DATE	REVISION	BY	DATE	CHECKED	R.MARKS	04/02	STATE ROAD NO. 400			OSCEOLA COUNTY	F.P. NO. 242531 I	SHEET 5 OF 13
															</	

STATE ROAD 400 (I-4) INTERCHANGE AT STATE ROAD 530 (US 192)









N.E. COR.,  
N.E. 1/4  
SEC. 5  
FOUND 6"X6"  
CONC. MON.  
W/ 1 1/8" PIPE  
IN CENTER  
(NO I.D.)  
C.C.R.\*0011777

STATE ROAD 400 (I-4) INTERCHANGE AT STATE ROAD 530 (US 192)





SEE SHEET 2 FOR FURTHER DETAIL

SEC. 18 12, TWP. 25 S., RGE. 27 E.

THIS MAP IS NOT A SURVEY

RIGHT OF WAY MAP	FLORIDA DEPARTMENT OF TRANSPORTATION RIGHT OF WAY MAPPING	APPROVED BY	DATE							BY	DATE	F.A.P. NO. N/A	SECTION 92130	MAPS PREPARED BY	FIELD BOOK NO.'S	
		<i>Deborah Nott</i>	4-26-02							PRELIM	P.McCRAY			02/01	URS CORPORATION	SEE GENERAL NOTES ON SHEET ONE
										FINAL	D.KING			04/02	W.P.I. No. 5147335	SCALE: 1"=100'
		REVISION	BY	DATE	REVISION	BY	DATE	CHECKED	R.MARKS	04/02	STATE ROAD NO. 400	OSCEOLA COUNTY	F.P. NO. 242531	SHEET 8 OF 13		

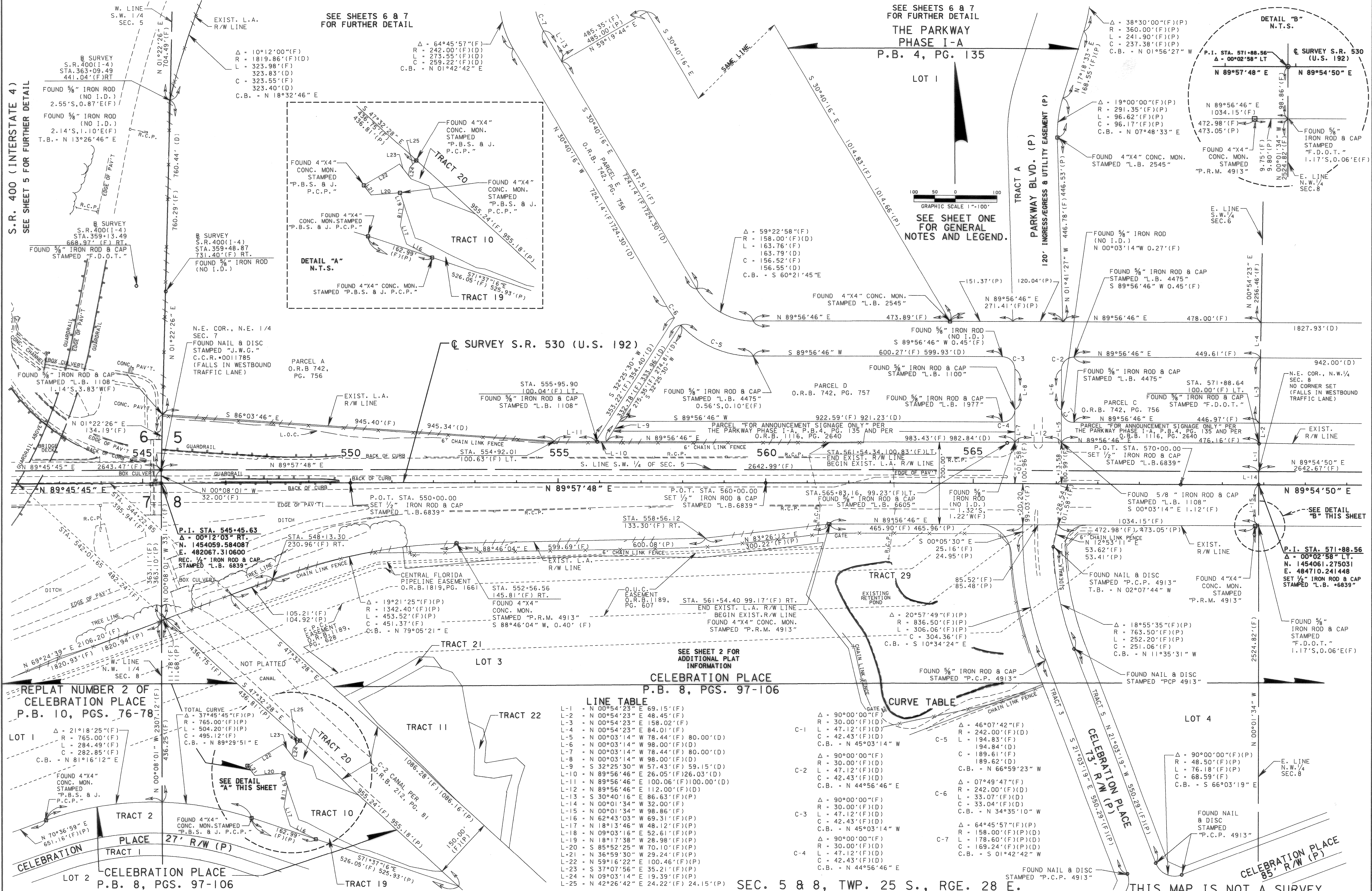
STATE ROAD 400 (I-4) INTERCHANGE AT STATE ROAD 530 (US 192)





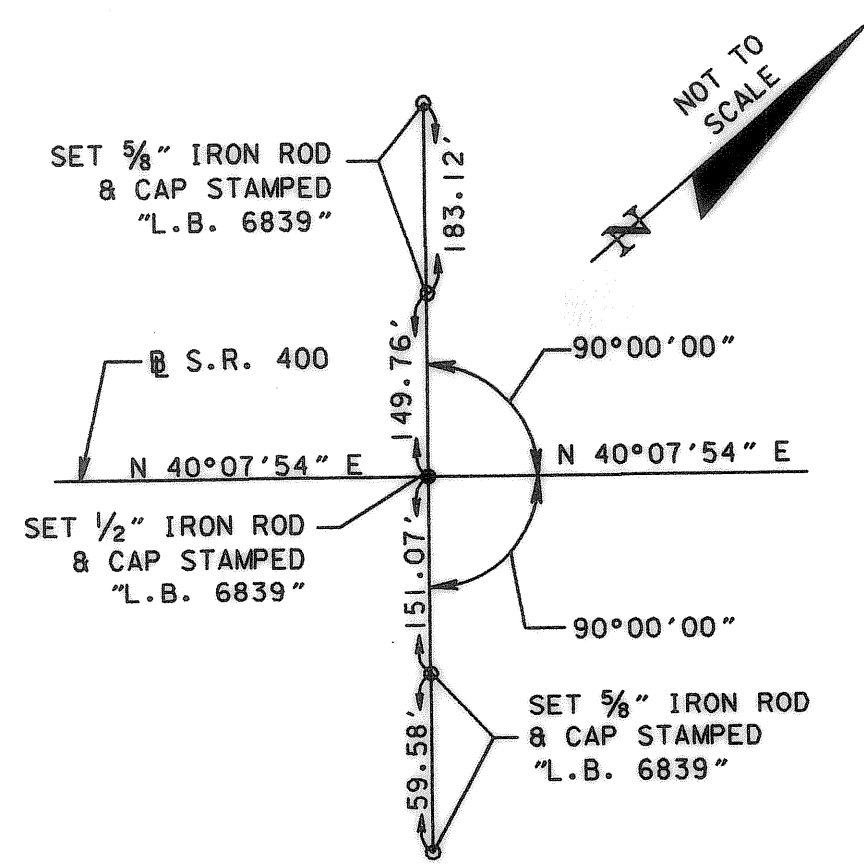


S.R. 400 (INTERSTATE 4)  
SEE SHEET 5 FOR FURTHER DETAIL

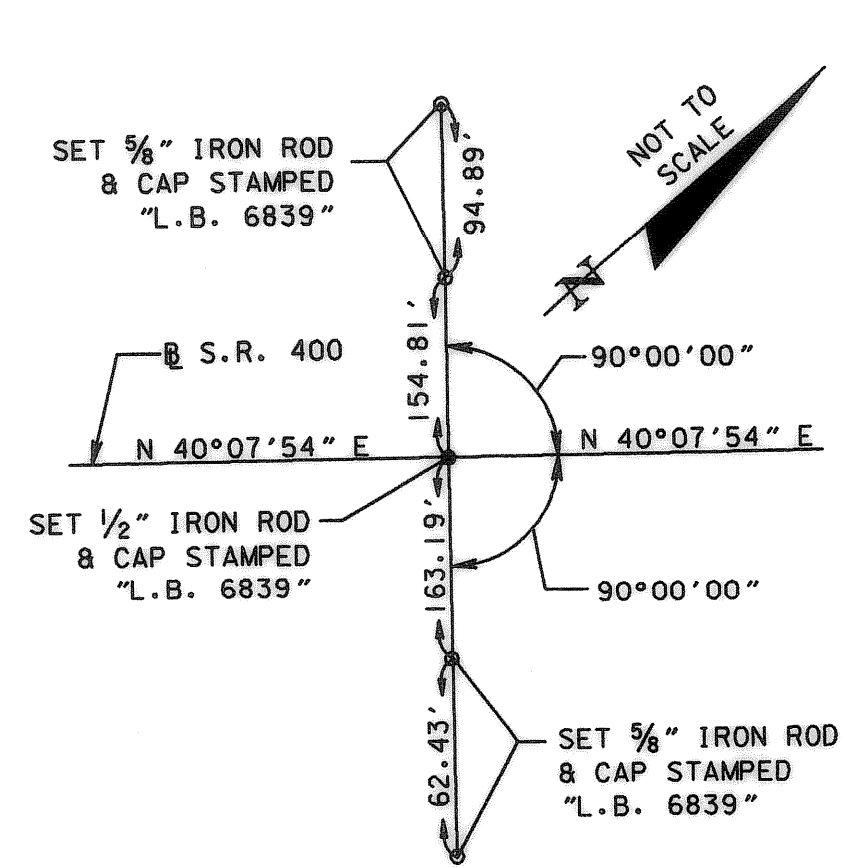


RIGHT OF WAY MAP		FLORIDA DEPARTMENT OF TRANSPORTATION RIGHT OF WAY MAPPING		APPROVED BY <i>Deborah Mott</i> 4-26-02 FOR DISTRICT SECRETARY		BY P. MCGRAY D. KING R. MARKS		DATE 02/01 04/02 04/02		F.A.P. NO. N/A		SECTION 92130		MAPS PREPARED BY URS CORPORATION		FIELD BOOK NO. 'S SEE GENERAL NOTES ON SHEET ONE	
STATE ROAD NO. 400		OSCEOLA COUNTY		W.P.I. No. 5147335		F.P. NO. 242531 I		SHEET 10 OF 13		STATE ROAD 400 (I-4) INTERCHANGE AT STATE ROAD 530 (US 192)							

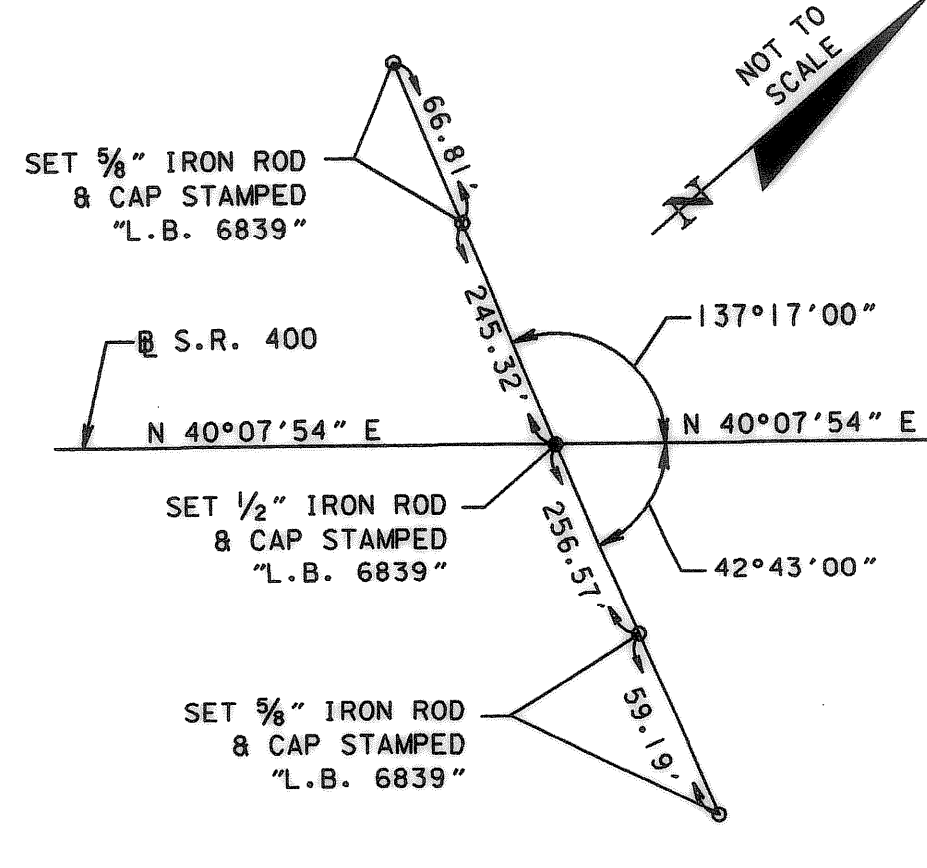




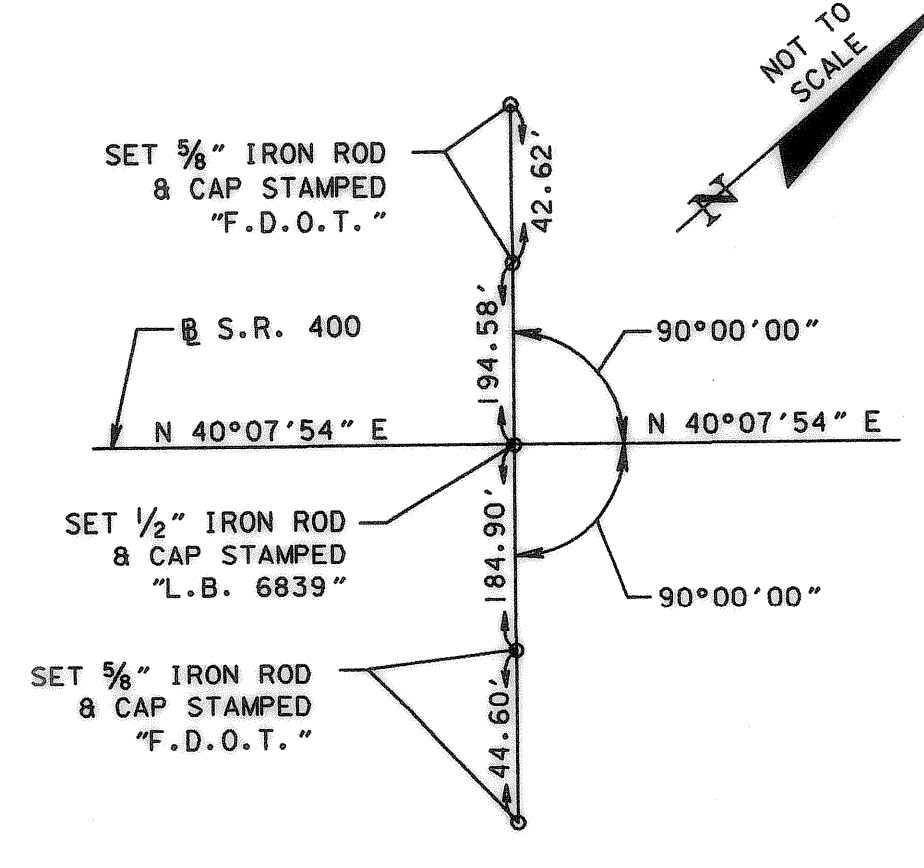
BEGIN SURVEY  
STA. 324+80.25  
S.R. 400



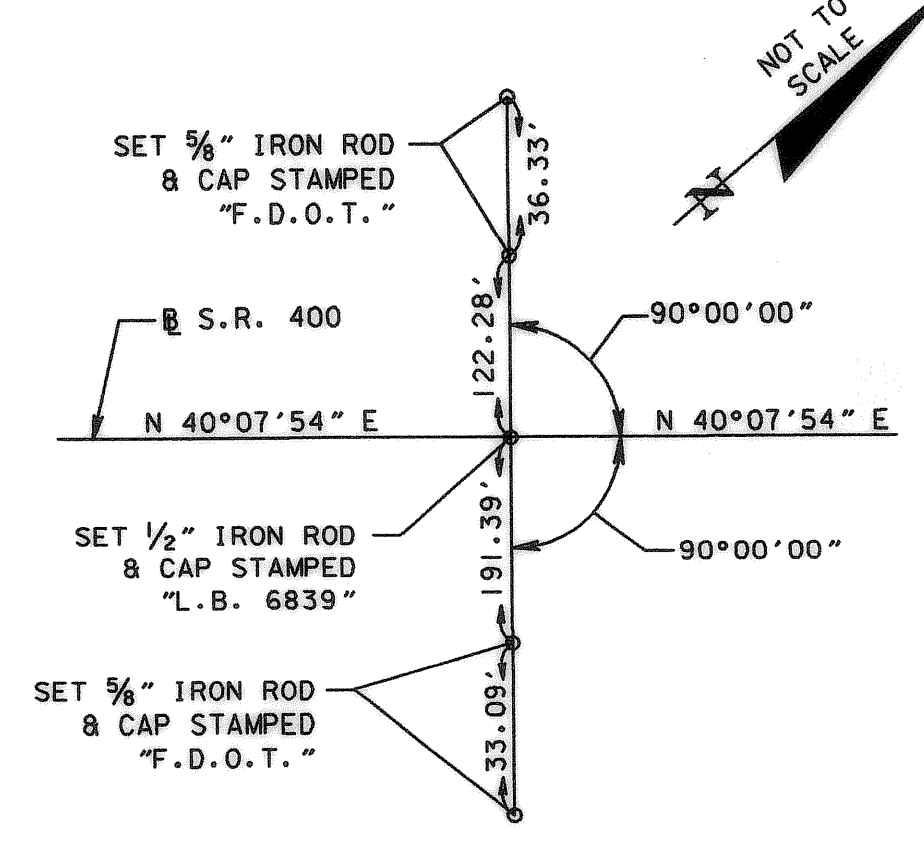
P.O.T. STA. 334+64.50  
S.R. 400



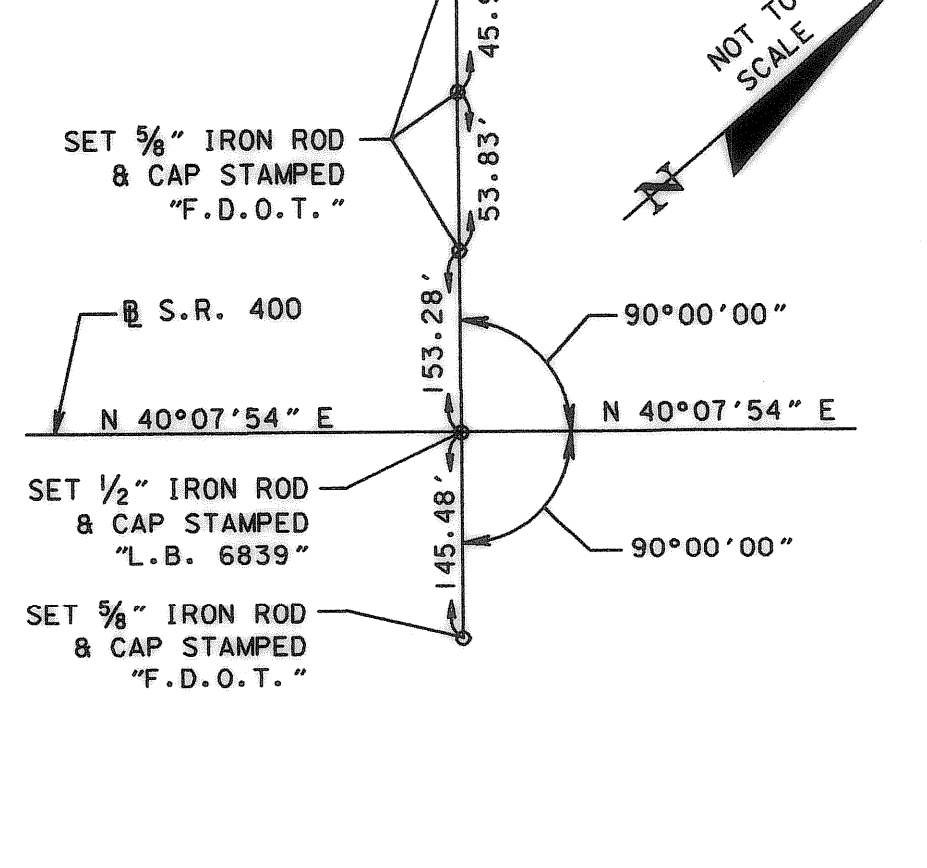
P.O.T. STA. 344+48.75  
S.R. 400



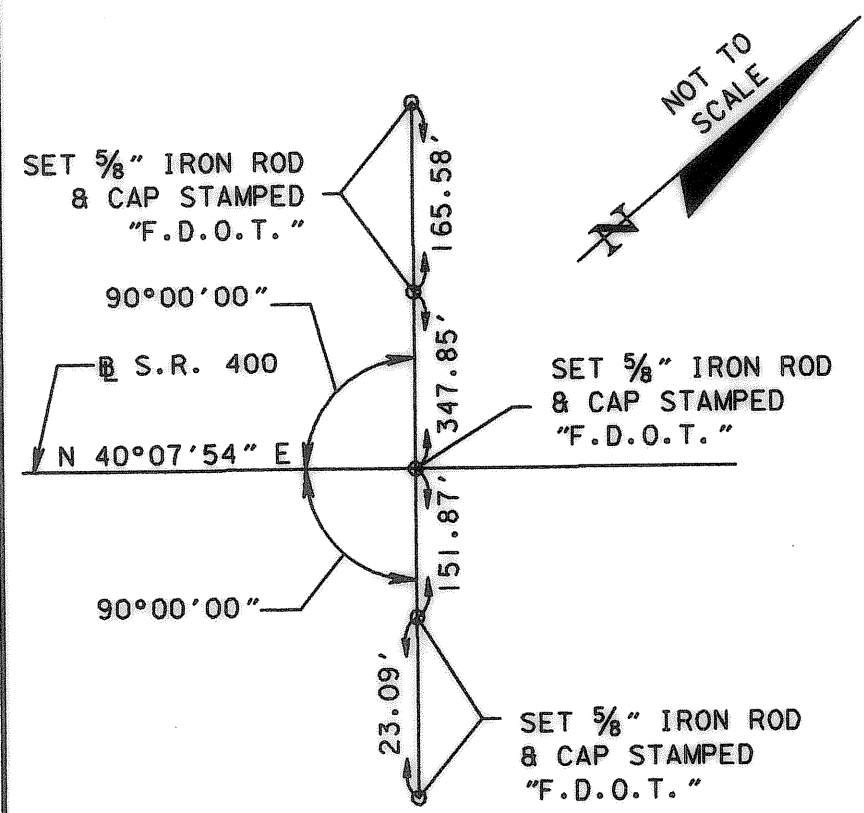
P.O.T. STA. 360+00.00  
S.R. 400



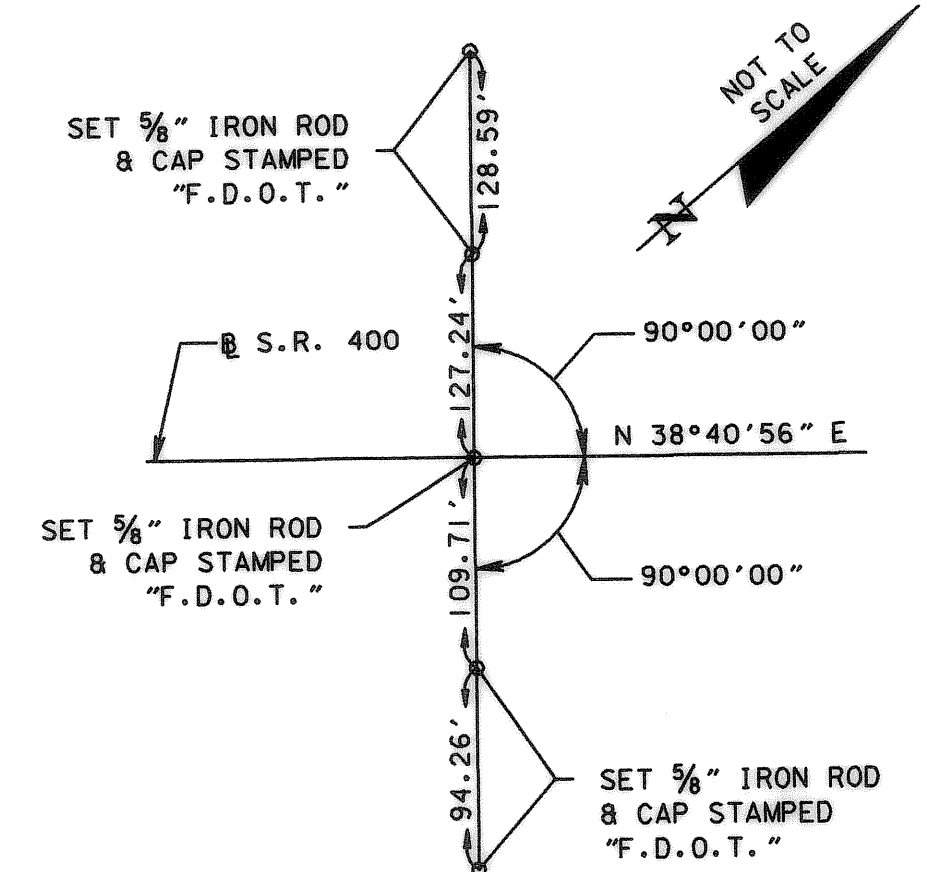
P.O.T. STA. 370+00.00  
S.R. 400



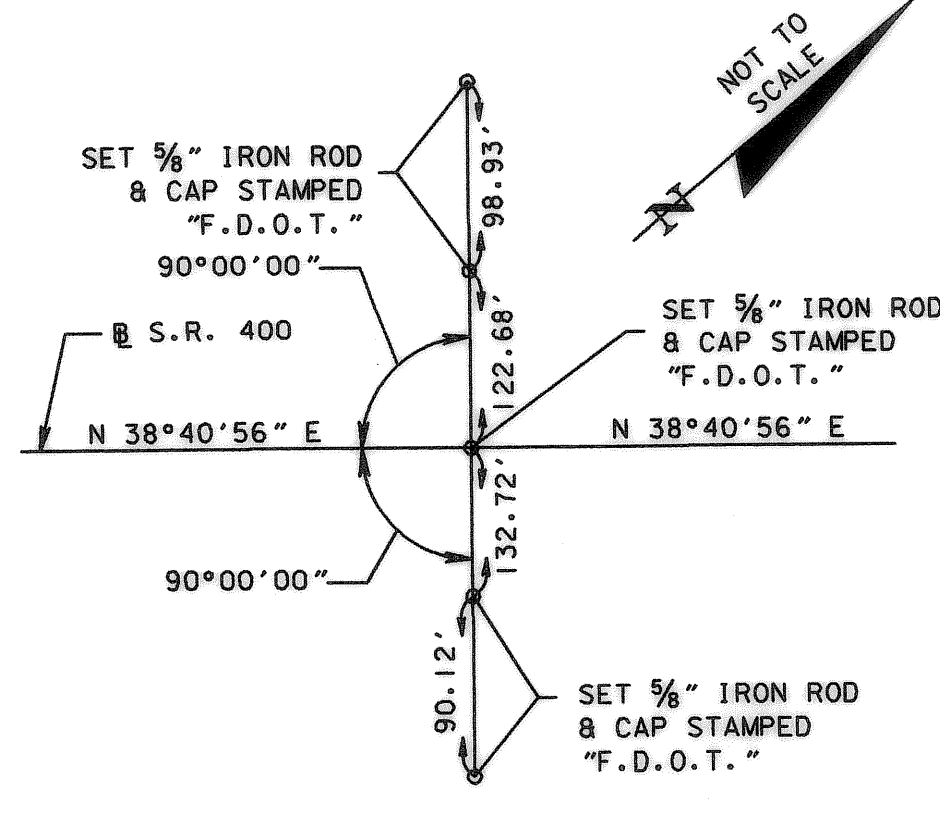
P.O.T. STA. 380+00.00  
S.R. 400



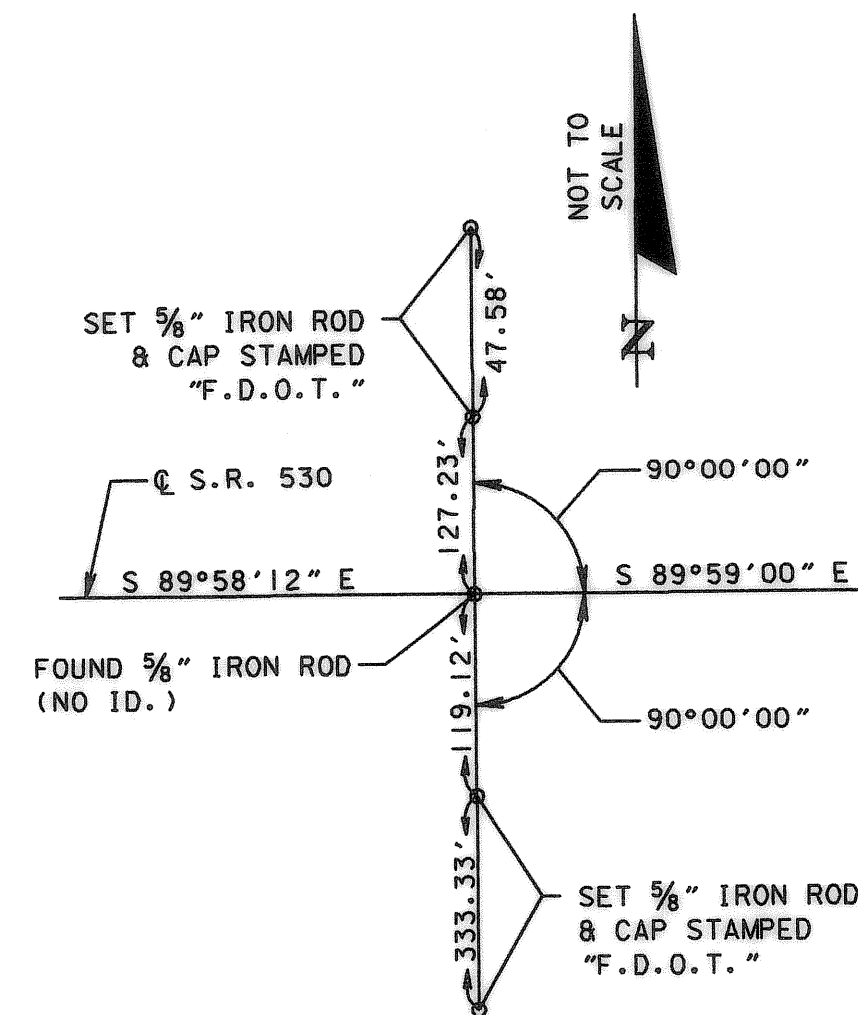
P.C. STA. 390+67.07  
S.R. 400



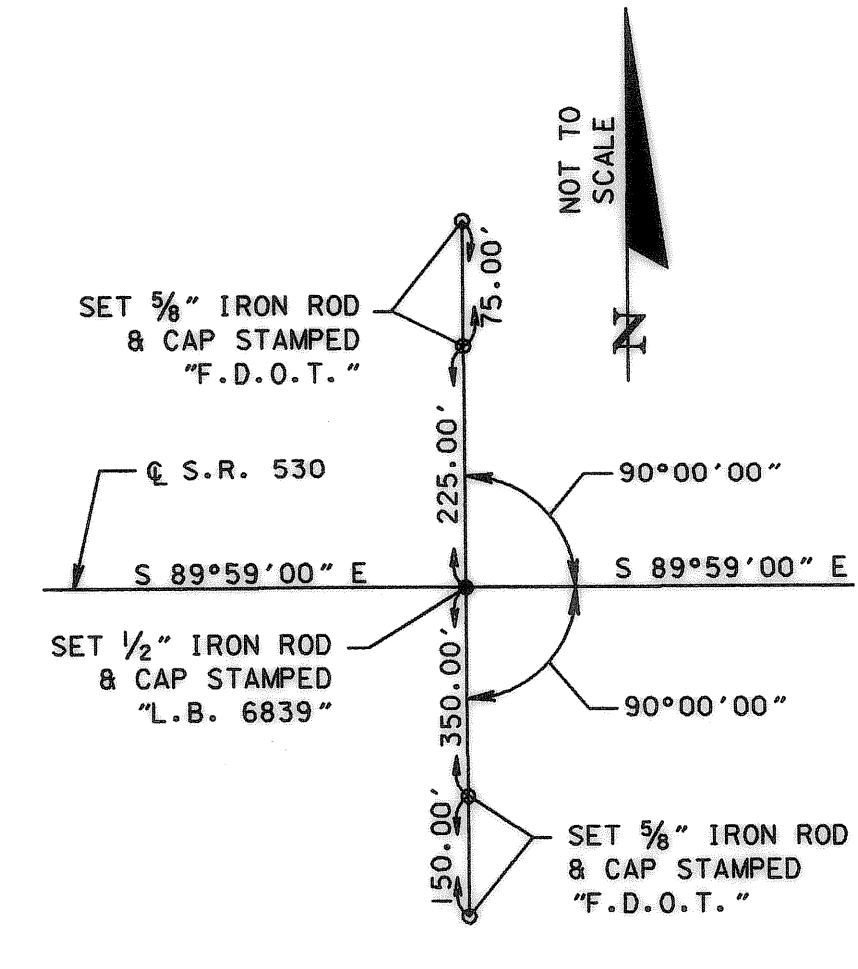
P.T. STA. 412+41.10  
S.R. 400



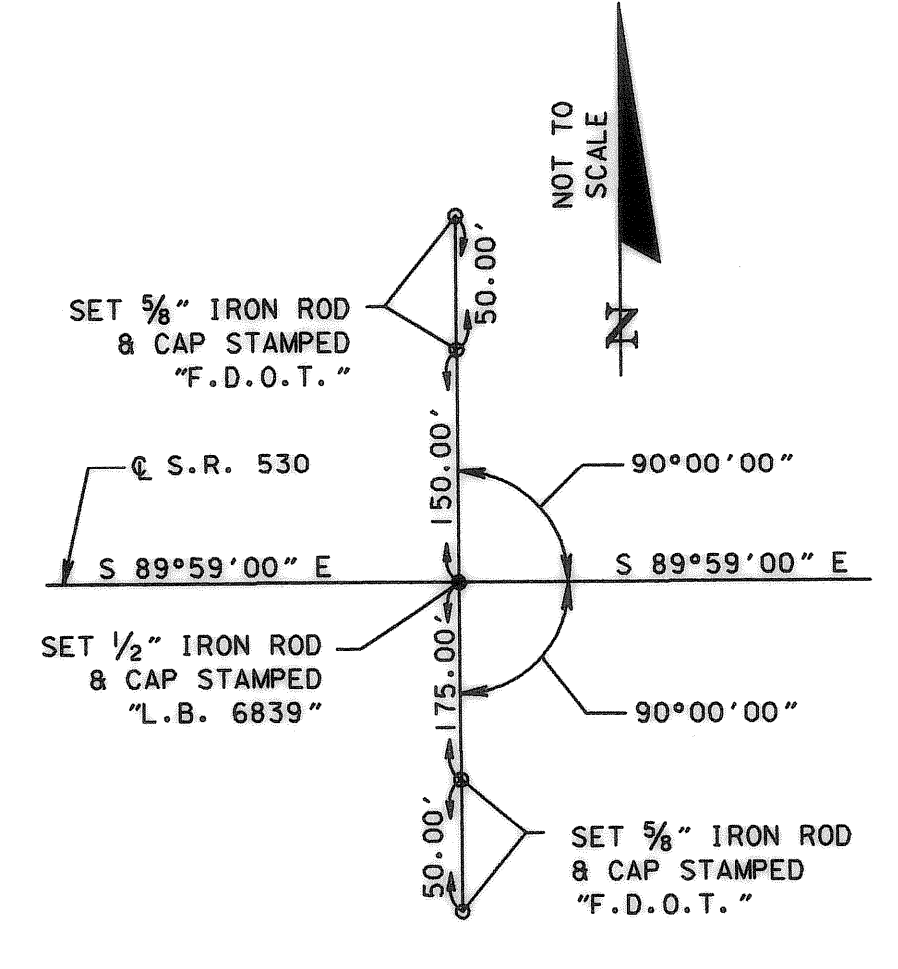
END SURVEY  
STA. 416+05.58  
S.R. 400



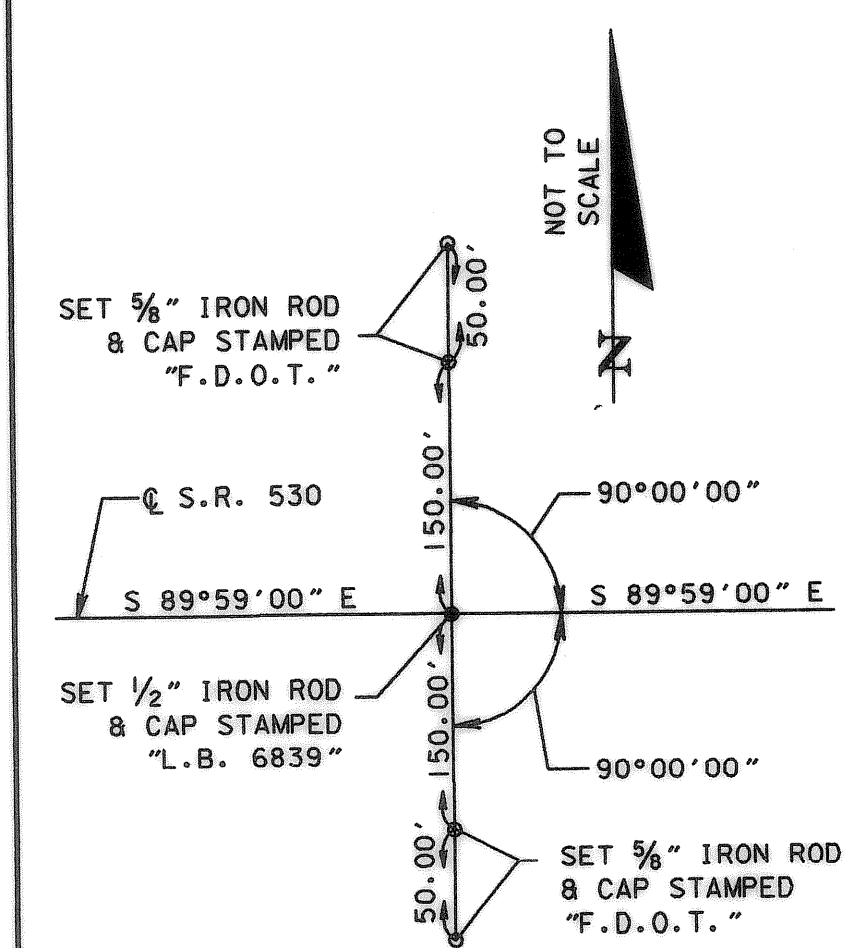
P.I. STA. 466+16.59  
S.R. 530  
 $\Delta = 00^{\circ}00'48''$  LT.



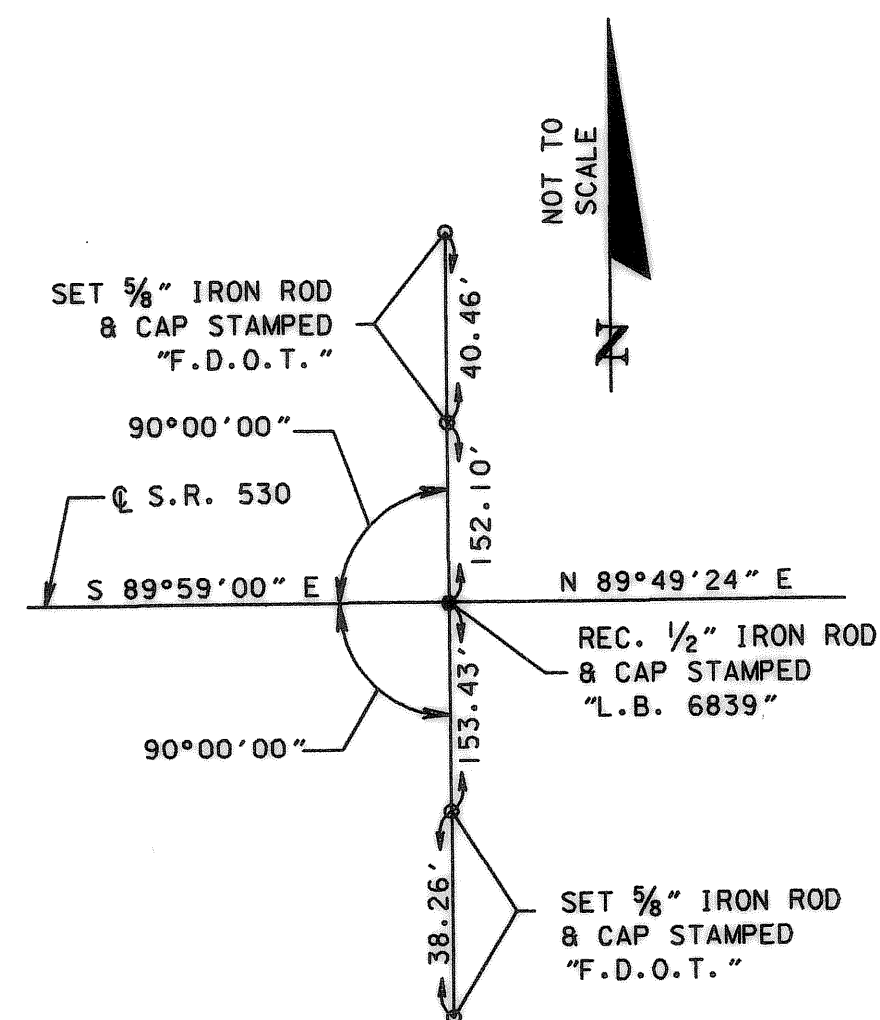
P.O.T. STA. 470+00.00  
S.R. 530



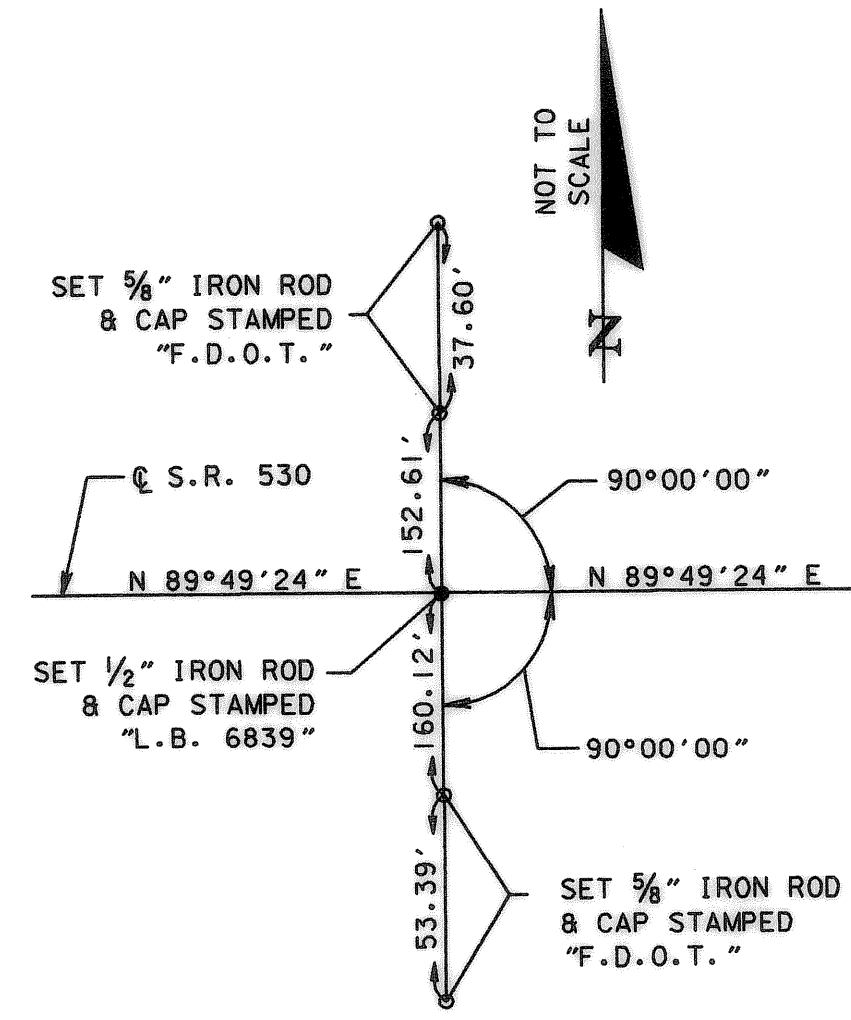
P.O.T. STA. 480+00.00  
S.R. 530



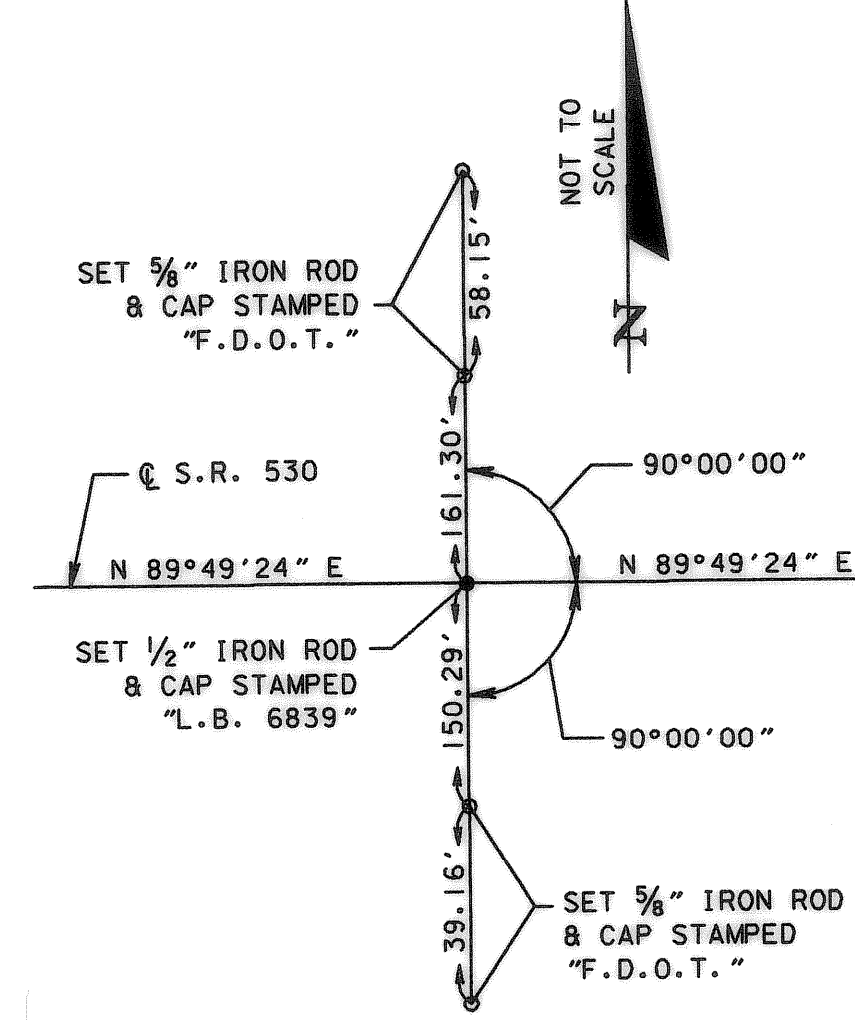
P.O.T. STA. 490+00.00  
S.R. 530



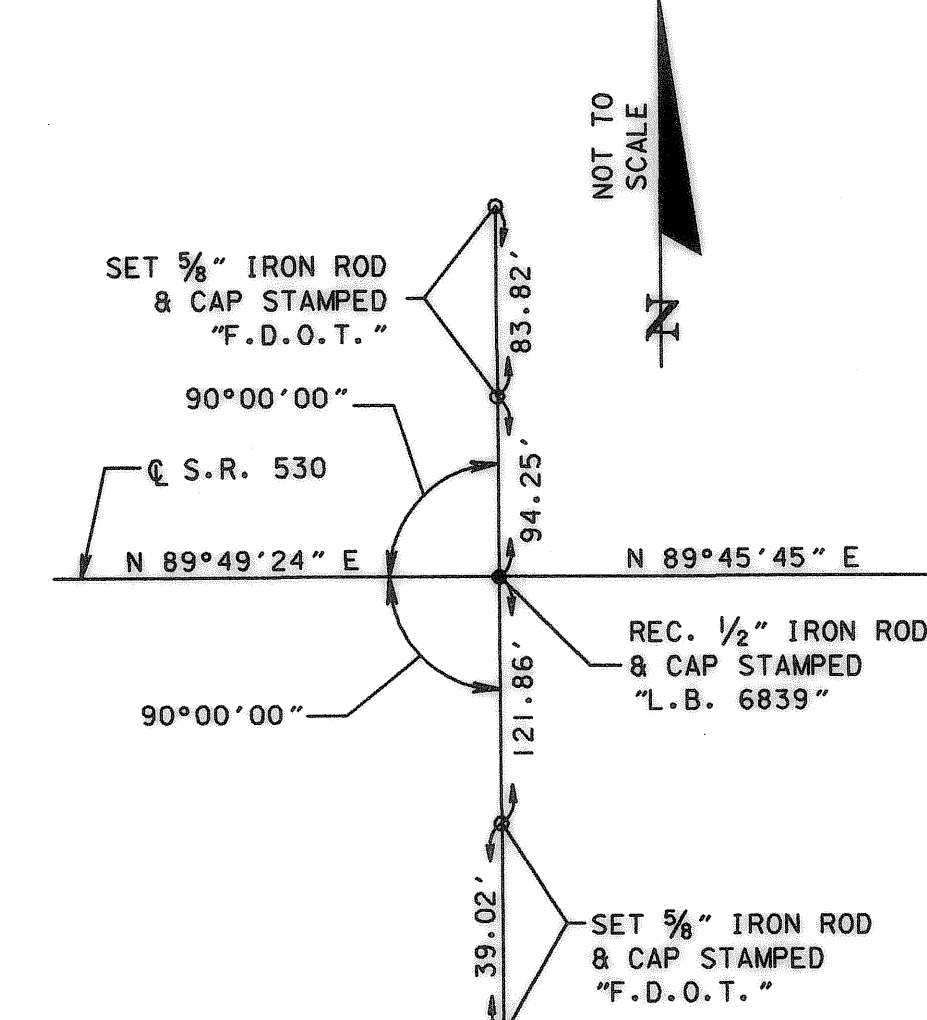
P.I. STA. 492+74.68  
S.R. 530  
 $\Delta = 00^{\circ}11'36''$  LT.



P.O.T. STA. 500+00.00  
S.R. 530



P.O.T. STA. 510+00.00  
S.R. 530



P.I. STA. 519+02.20  
S.R. 530  
 $\Delta = 00^{\circ}03'39''$  LT.

THIS MAP IS NOT A SURVEY

RIGHT OF WAY MAP

FLORIDA DEPARTMENT OF TRANSPORTATION  
RIGHT OF WAY MAPPING

APPROVED BY  
*Deborah Mott*  
DATE 4-28-02  
FOR DISTRICT SECRETARY

REVISION	BY	DATE	REVISION	BY	DATE

	BY	DATE
PRELIM	P. McCRAY	02/01
FINAL	D. KING	04/02
CHECKED	R. MARKS	04/02

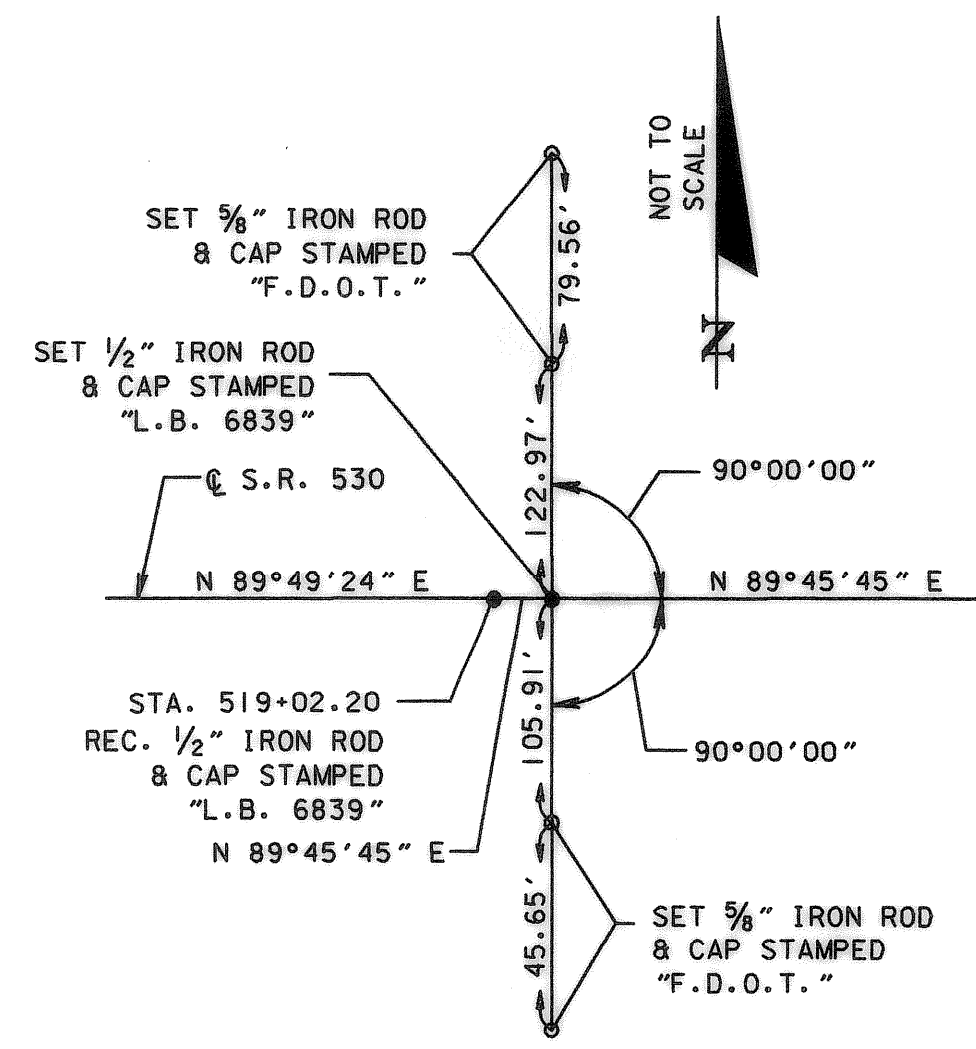
F.A.P. NO. N/A  
STATE ROAD NO. 400

SECTION 92130  
OSCEOLA COUNTY

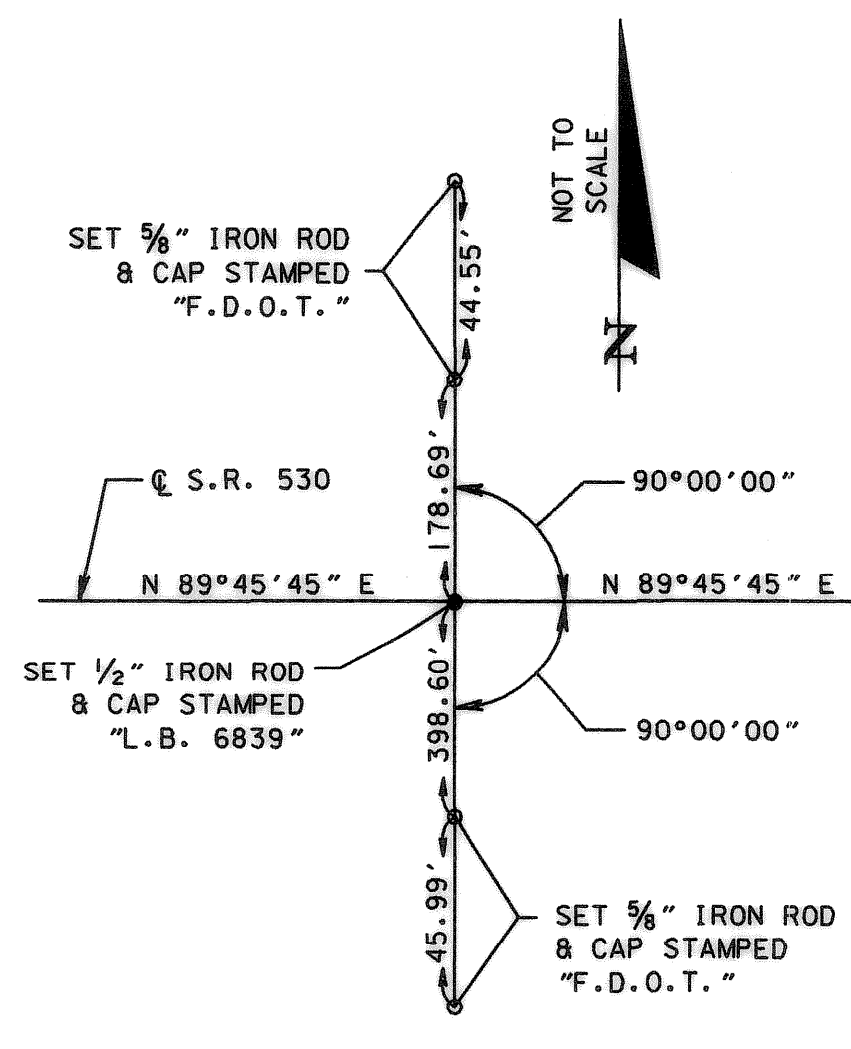
MAPS PREPARED BY URS CORPORATION	FIELD BOOK NO.'S SEE GENERAL NOTES ON SHEET ONE
W.P.I. NO. 5147335	SCALE: N/A
F.P. NO. 242531	SHEET 11 OF 13

STATE ROAD 400 (I-4) INTERCHANGE AT STATE ROAD 530 (US 192)

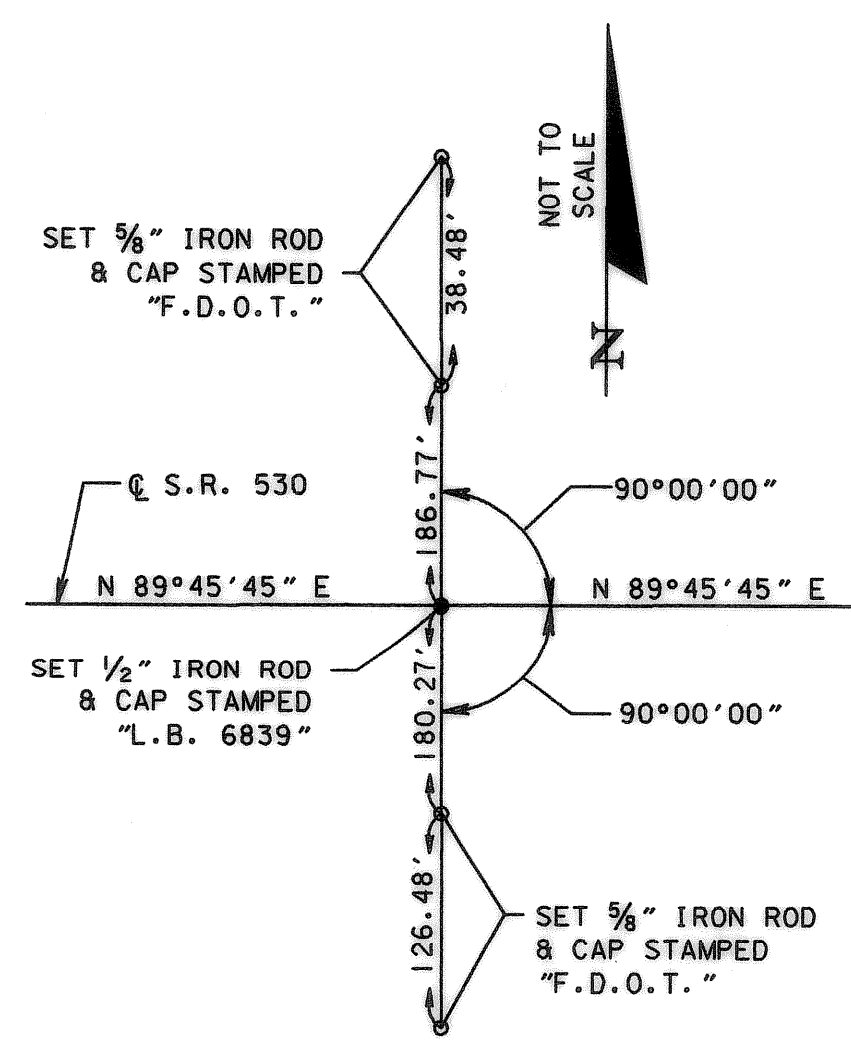




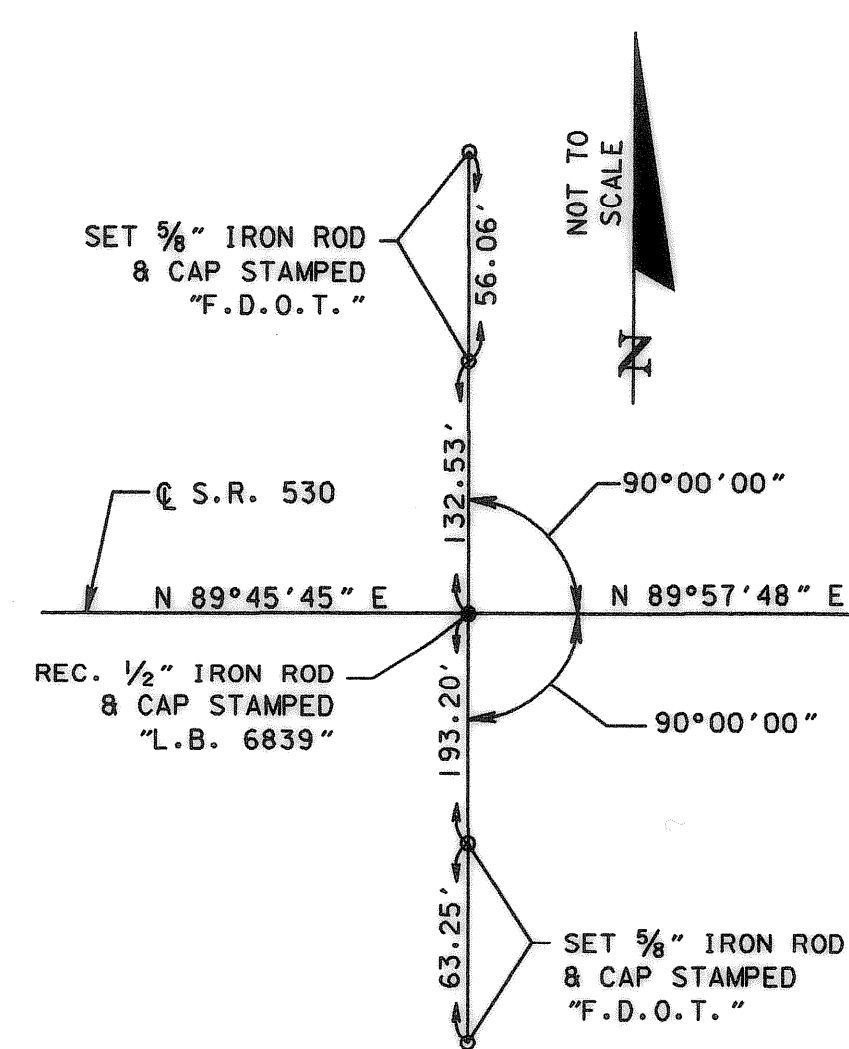
P.O.T. STA. 520+00.00  
S.R. 530



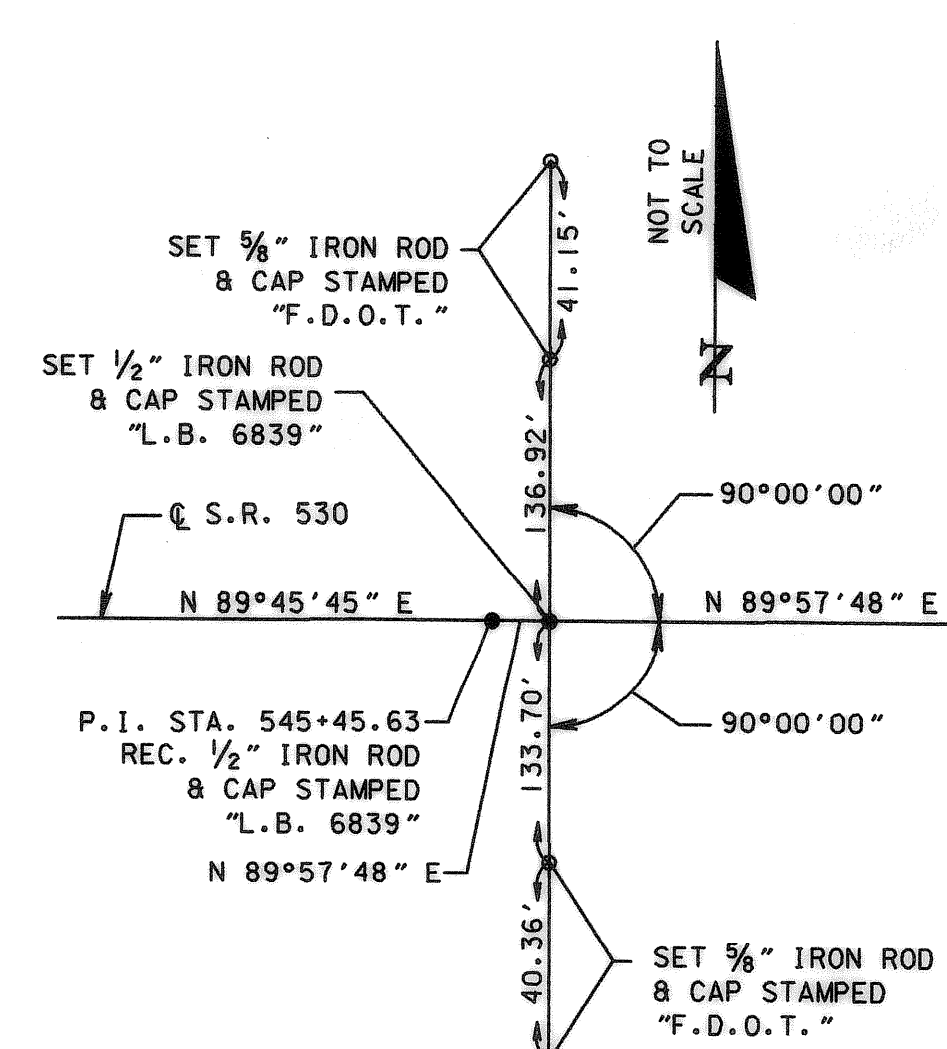
P.O.T. STA. 530+00.00  
S.R. 530



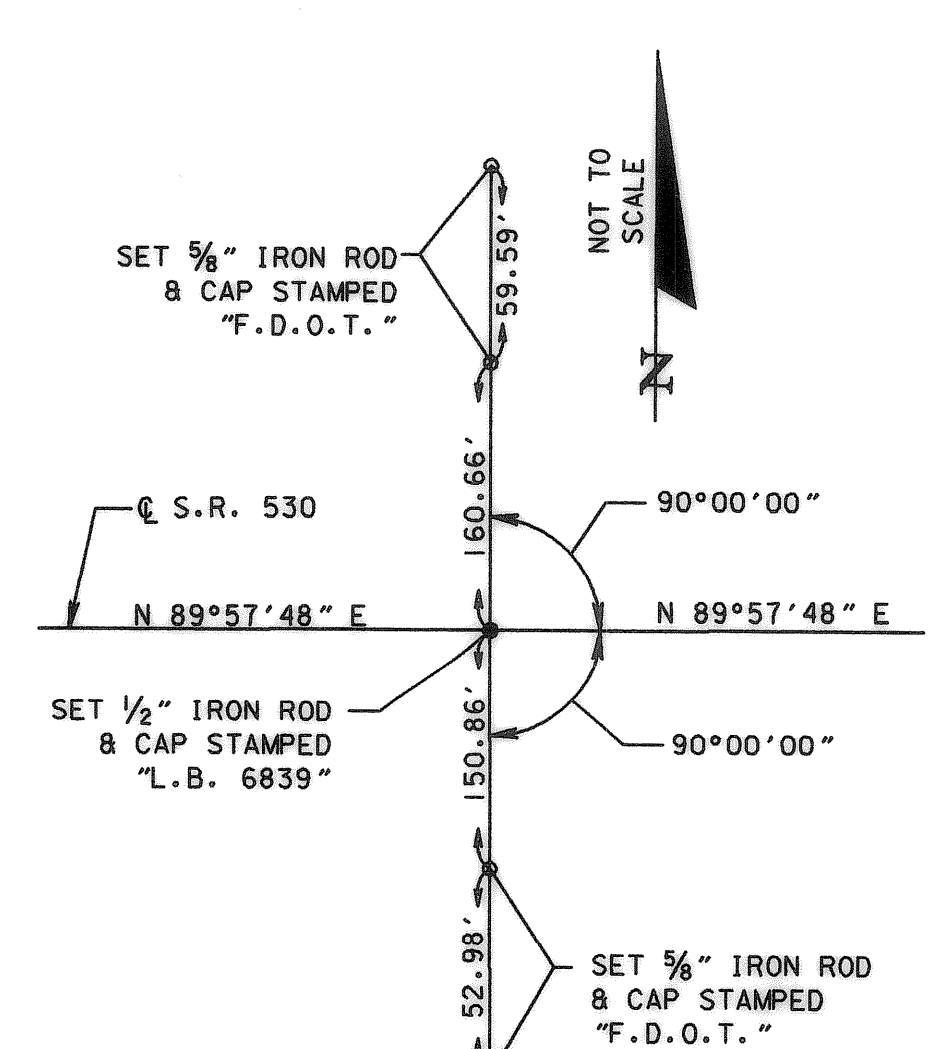
P.O.T. STA. 540+00.00  
S.R. 530



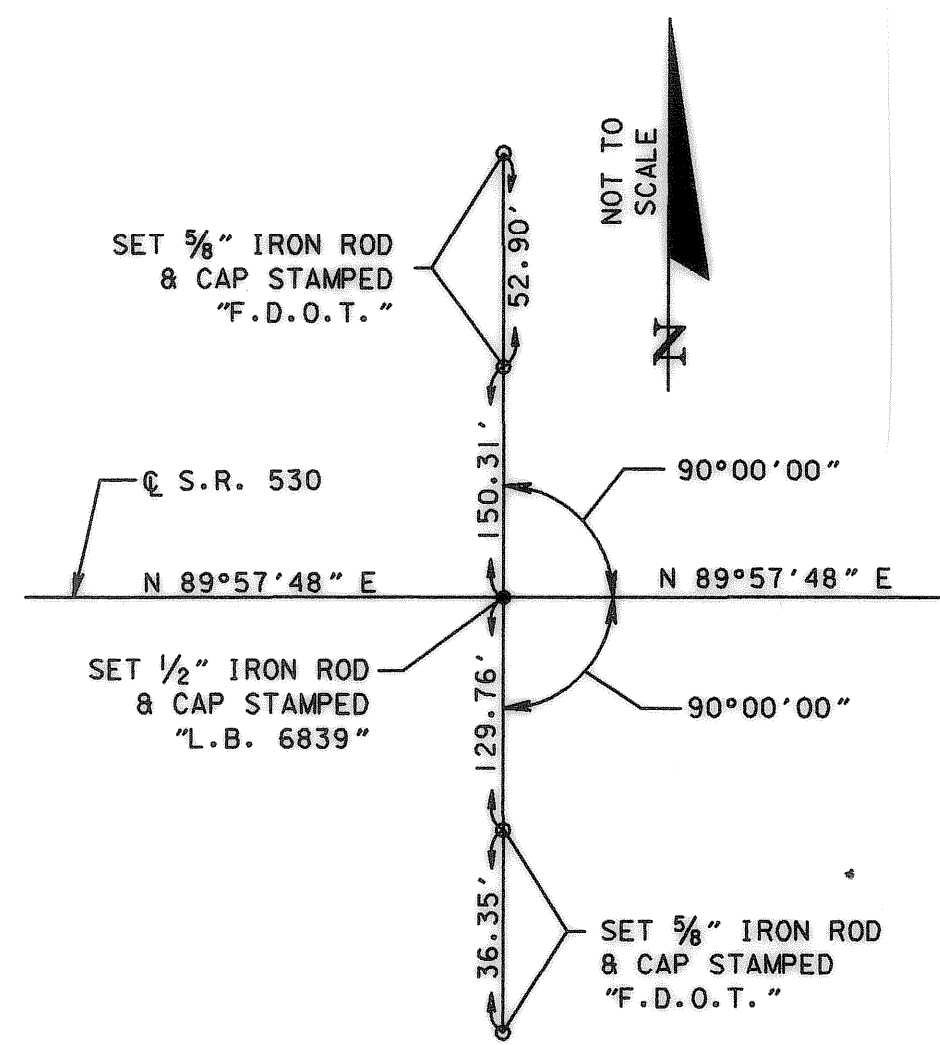
P.I. STA. 545+45.63  
S.R. 530  
 $\Delta = 00^{\circ}12'03''$  RT.



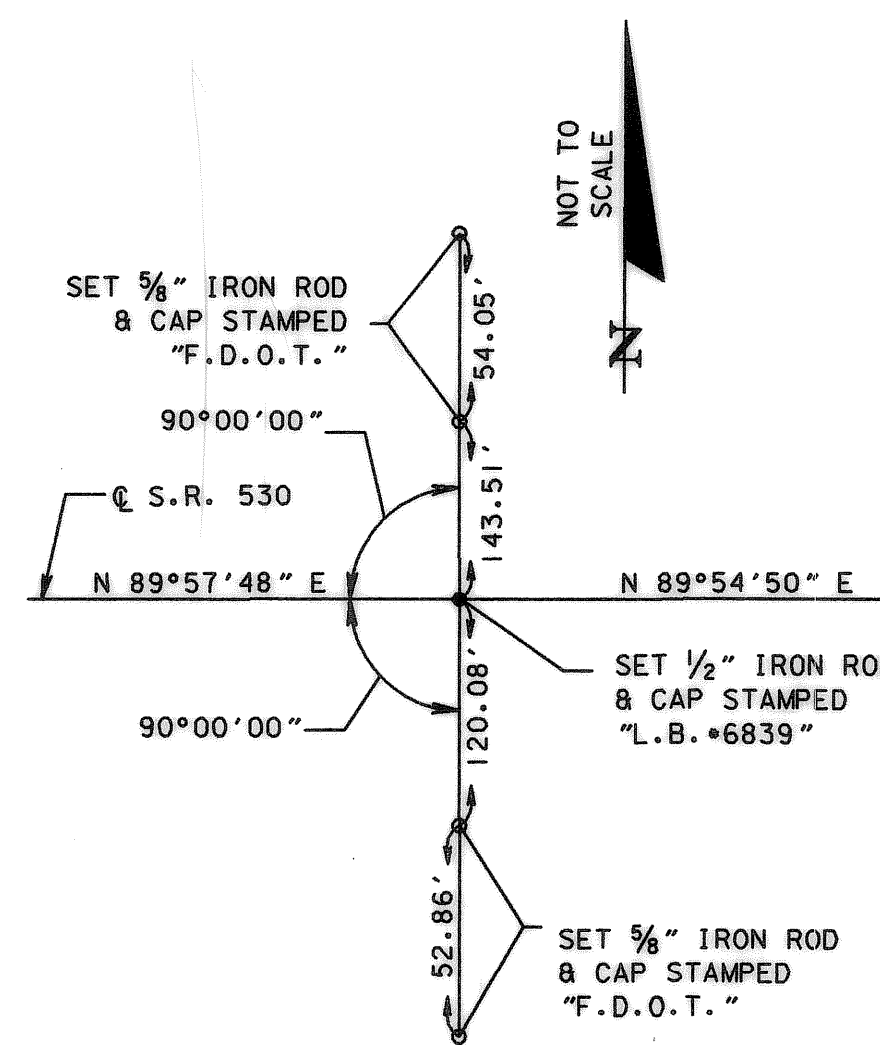
P.O.T. STA. 550+00.00  
S.R. 530



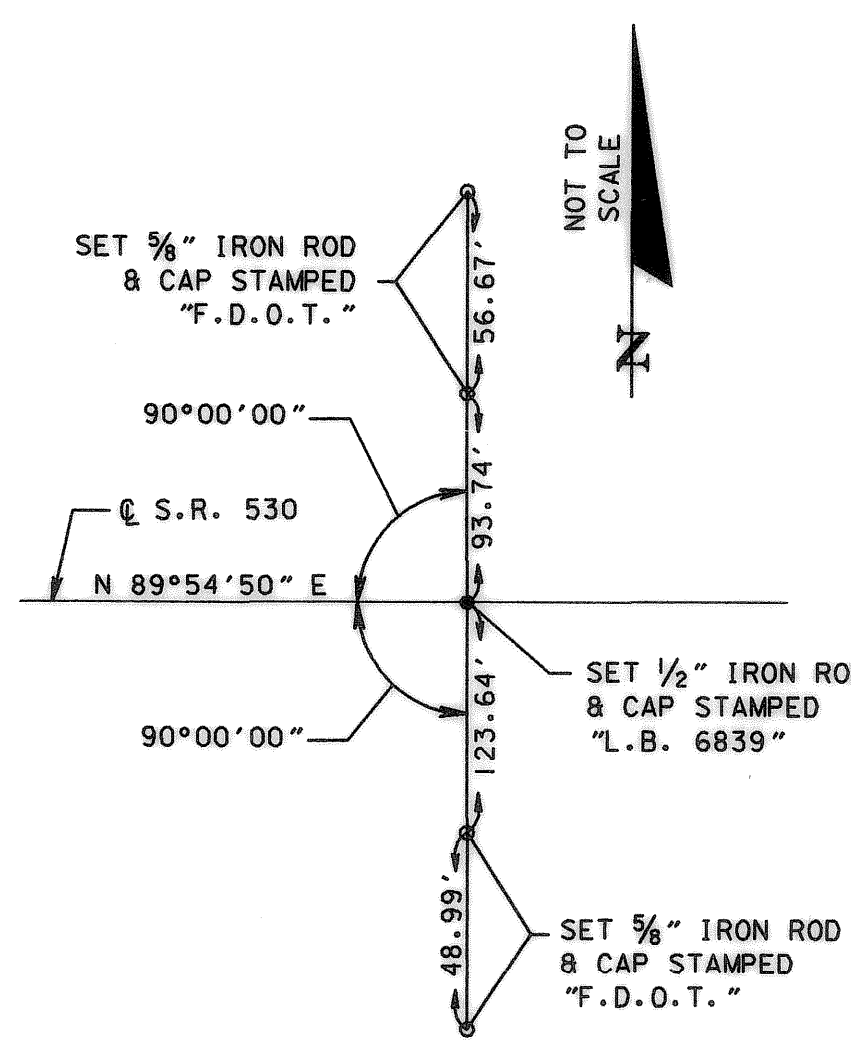
P.O.T. STA. 560+00.00  
S.R. 530



P.O.T. STA. 570+00.00  
S.R. 530



P.I. STA. 571+88.56  
S.R. 530  
 $\Delta = 00^{\circ}02'58''$  LT.



END SURVEY STA. 598+31.20  
S.R. 530

RIGHT OF WAY MAP

FLORIDA DEPARTMENT OF TRANSPORTATION  
RIGHT OF WAY MAPPING

APPROVED BY  
*Danaher*  
DATE 4-26-02  
FOR DISTRICT SECRETARY

REVISION	BY	DATE	REVISION	BY	DATE

	BY	DATE
PRELIM	P. McGRAY	02/01
FINAL	D. KING	04/02
CHECKED	R. MARKS	04/02

F.A.P. NO. N/A  
STATE ROAD NO. 400

SECTION 92130  
OSCEOLA COUNTY

MAPS PREPARED BY URS CORPORATION	FIELD BOOK NO.'S SEE GENERAL NOTES ON SHEET ONE
W.P.I. NO. 5147335	SCALE: N/A
F.P. NO. 242531 I	SHEET 12 OF 13

THIS MAP IS NOT A SURVEY

STATE ROAD 400 (I-4) INTERCHANGE AT STATE ROAD 530 (US 192)